

Vita-Sana RESIDENZEN

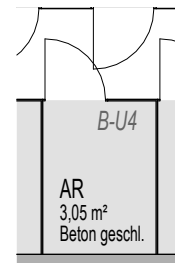
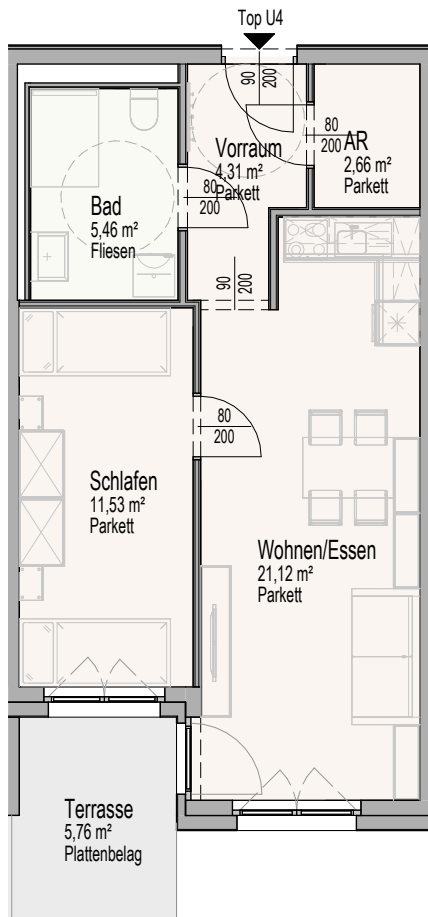
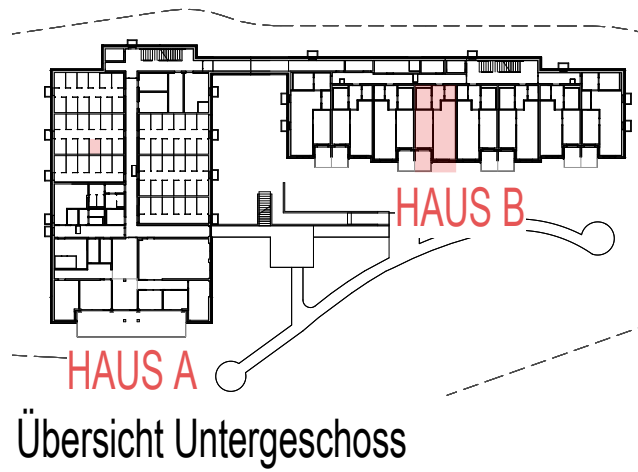
Vermietungsplan

Vita-Sana Seniorenresidenz Großmain



Vita-Sana Residenzen GmbH
Tumpenweg 30 - 31
5084 Großmain

office@vita-sana-real.com
Tel.: +43 4245 64989
Fax: +43 4245 6498913



KG TOP U4

| | |
|----------------------|----------------------------|
| Vorraum | 4,31 m² |
| AR | 2,66 m² |
| Bad | 5,46 m² |
| Schlafen | 11,53 m² |
| Wohnen/Essen | 21,12 m² |
| WOHNUTZFLÄCHE | 45,08 m² |
| | |
| Terrasse | 5,76 m² |
| AR Keller | 3,05 m² |

